

BYOLIVING



BYOLIVING

Brand Catalogue

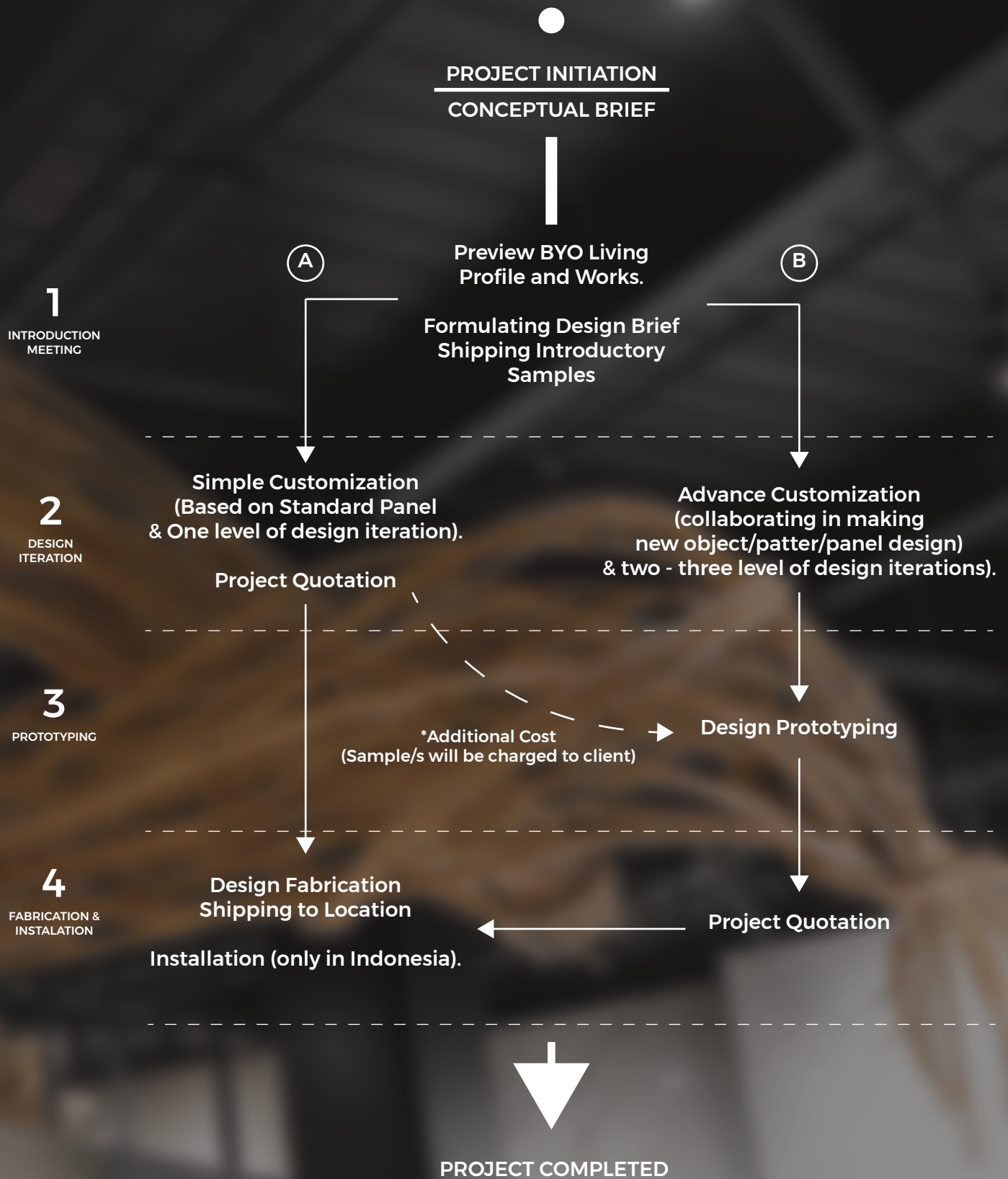
WHAT WE DO?

BYO Living is a weaving customized design specialist that combines progressive research, development, and construction with on-site specific solutions. As a weaving design specialist, we work closely with natural rattan and other recycled all-weather materials such as cane, fiber, synthetic rattan, metal, plastic, recycled plastic, and leather. All of our handwoven products can be personalised with client's goals and vision

Founder Lim Masulin launched the Jakarta based firm in 2008 with a vision to provide a forward thinking, sustainable architectural design solutions for the global market, whilst working collaboratively with the local community to help preserve the indigenous craft and craftsmanship of weaving.

Pivoting between bespoke, conceptual, and commercial build project, the BYO Living brand is driven to provide the world with sustainable future design, technology, and craftsmanship





(A) Non- R & D based project.
[1 quotation except if there is additional prototyping request.]

(B) R & D based project.
[2 quotation; R&D + Fabrication/Installation.]

The logo for BYO Living features the word "BYO" in a white, sans-serif font, with a stylized white icon of three radiating lines above the letter "O". To the right of "BYO" is the word "LIVING" in a larger, white, all-caps, sans-serif font. The background is a dark, textured surface with a repeating geometric pattern of squares and lines, possibly a woven fabric or a perforated metal screen, with some light reflecting off it.

BYO LIVING

BYO Living are established as a company who combine a progressive architectural aesthetic with sustainable solutions, such as passive cooling, exterior, internal ventilation system, upcycling of industrial and commercial waste reimaged as building materials.

Our research and development team study ways in which to alleviate problems within the architectural process, whilst developing ideas, and creating solutions with sustainable materials, digital parametric design technology, and advanced weaving techniques.



Table of Contents

01

Exterior Project

03

Furniture Project

05

Materials
and Patterns

04

Installation
Artwork / Exhibition

02

Interior Project

06

Get In Touch

BYOLIVING

Exterior



Selected Projects

We offer the finest artistry in handweaving materials such as rattan, cane, fiber, synthetic, metal, plastic, recycled plastic, and leather. All of our handwoven products can be tailored to the client's goal and vision. We also provide product, pattern and installation consultation for our clients.





Architect / Designer : Modernspace
Location : Karawang
Material : Recyclable Synthetic Rattan
Pattern : Parametric Framing and Pattern

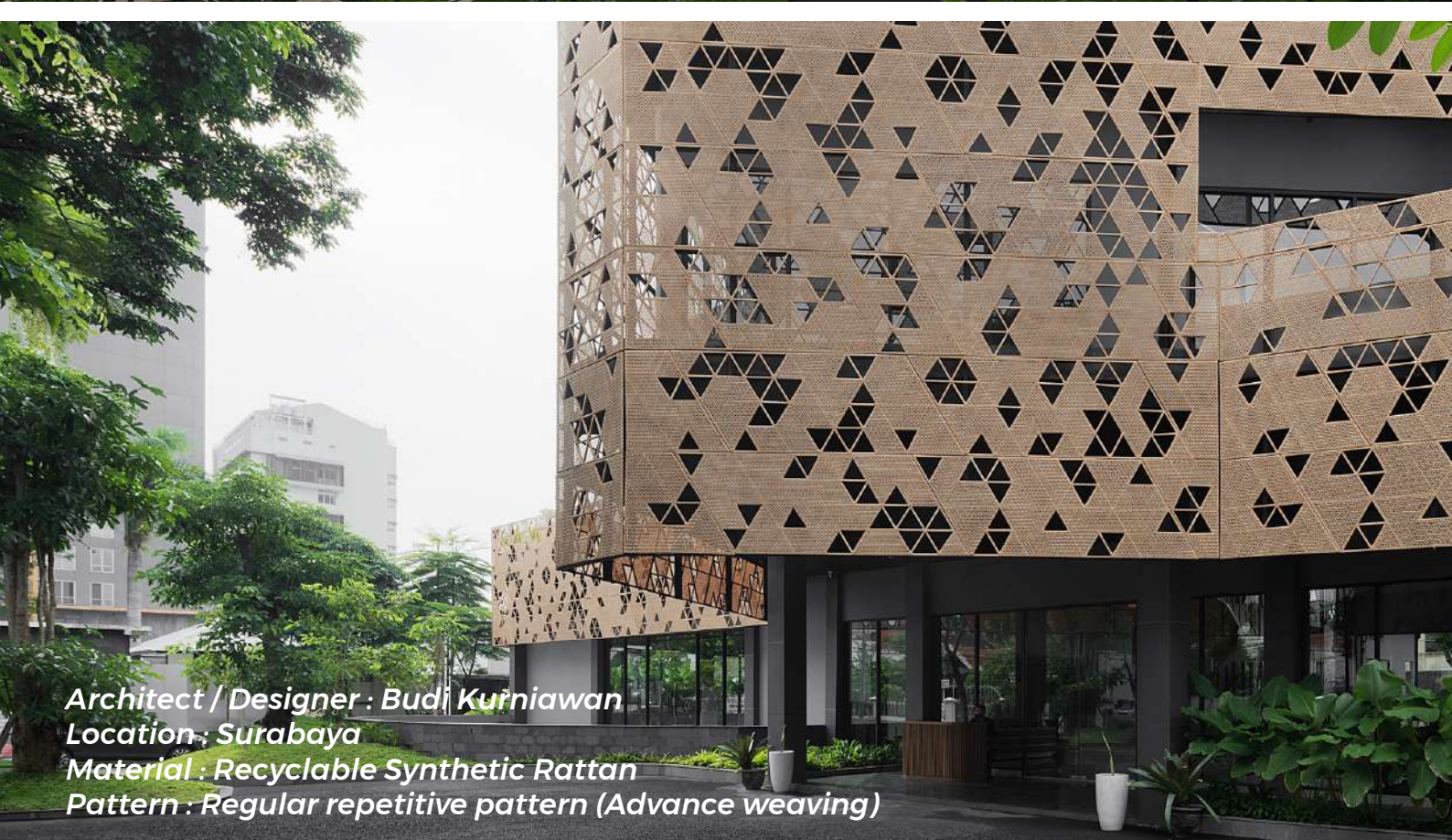
BMD
Berkas Veranda



BMJ

This bespoke facade weave becomes decorative elements that fulfill functionality, sustainable aspects, and the aesthetic of the building. The weave for the facade and ceiling uses recyclable synthetic rattan in Lime Stone color for long-term durability weave. And the pattern itself filtered the sunlight, maintaining thermal comfort in the building using the shadows it creates.





Architect / Designer : Budi Kurniawan

Location : Surabaya

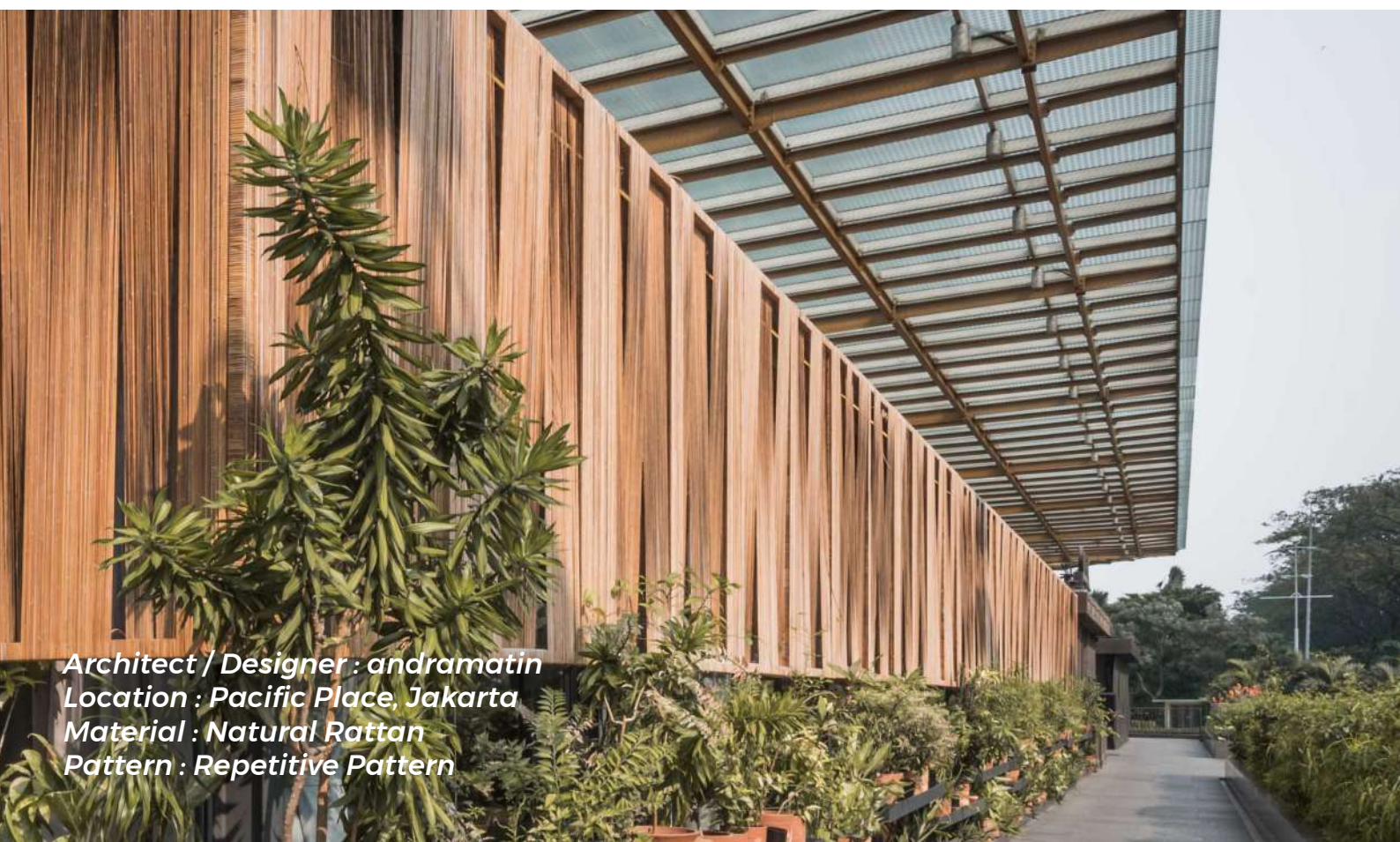
Material : Recyclable Synthetic Rattan

Pattern : Regular repetitive pattern (Advance weaving)

Grand Shamaya

"Sendang Bidadari" is a woven design that is influenced by Indonesia's rich cultural and natural diversity. We use synthetic materials with the most flexibility and durability possible. Budi Kurniawan's goal in creating this facade pattern is to create a visual composition that is both luxurious and embedded in Indonesia's locality.





*Architect / Designer : andramatin
Location : Pacific Place, Jakarta
Material : Natural Rattan
Pattern : Repetitive Pattern*



Robot &Co

Nearly a decade into its flourishing success, Indonesian hospitality and lifestyle powerhouse, presently known as Potato Head Family, recently came full circle with the shapeshifting revamp of its very first establishment - Potato Head Jakarta, which as of 2019 is named 'Robot & Co'.





Architect / Designer : Aedi Interior Design Bureau
Location : Kemang, Jakarta
Material : Recyclable Synthetic Rattan (Natural Color)
Pattern : Graphical Pixelation (Advance Weaving)

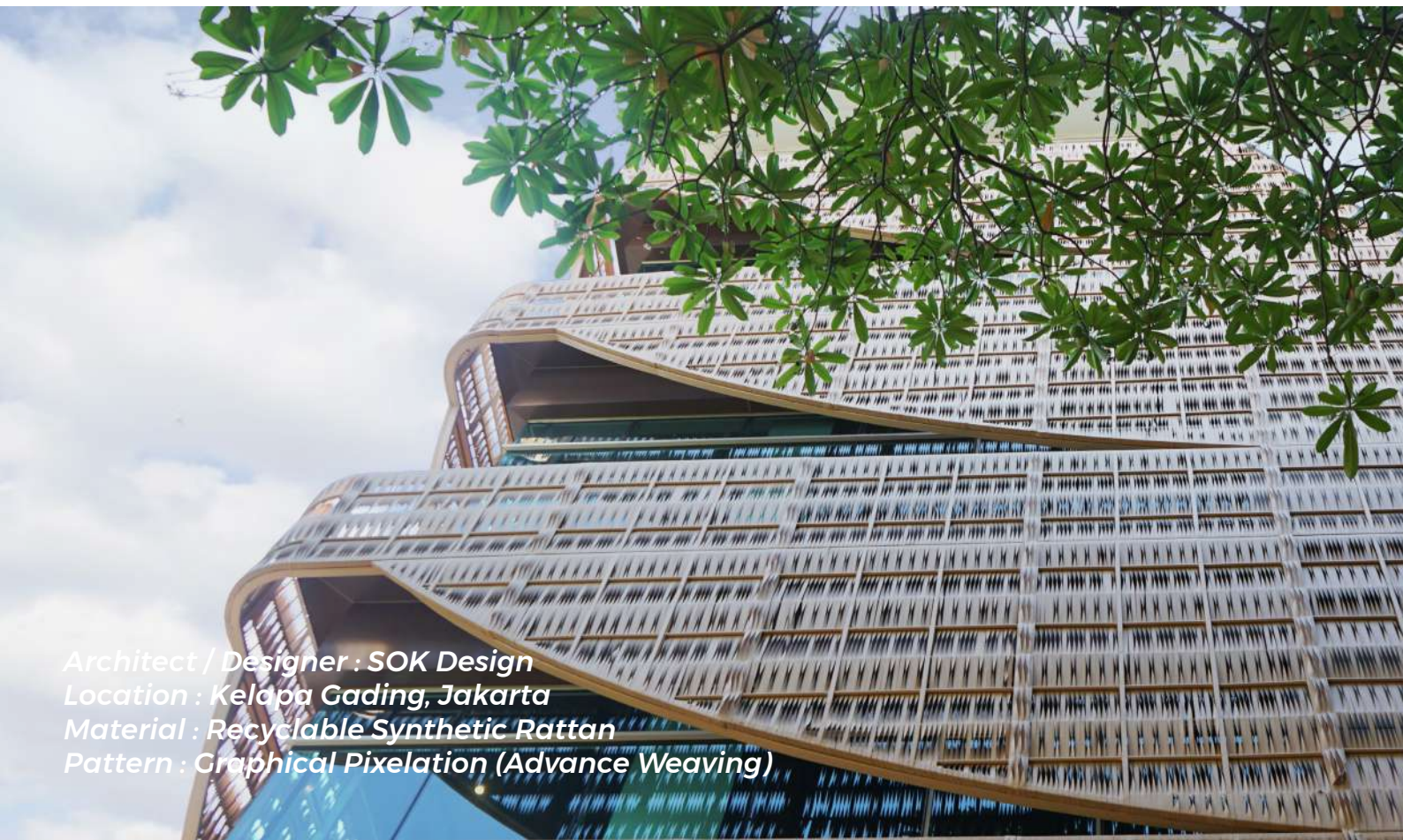


Ecaps

At ECAPS all furniture, fixture, staff apron and decorating elements are made from leftover, trash or waste. We don't want a highly decorated room for our space. We want to give a sample that recycling trash is beautiful and unperfectnes is a new form of aesthetic. Today, we want to strive for a cleaner, healthier world. Today we start from our self

• • •

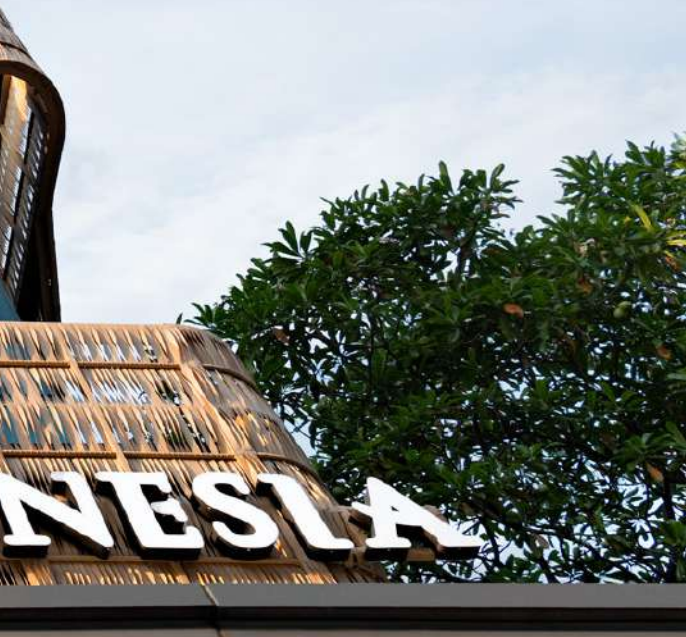




Architect / Designer : SOK Design
Location : Kelapa Gading, Jakarta
Material : Recyclable Synthetic Rattan
Pattern : Graphical Pixelation (Advance Weaving)

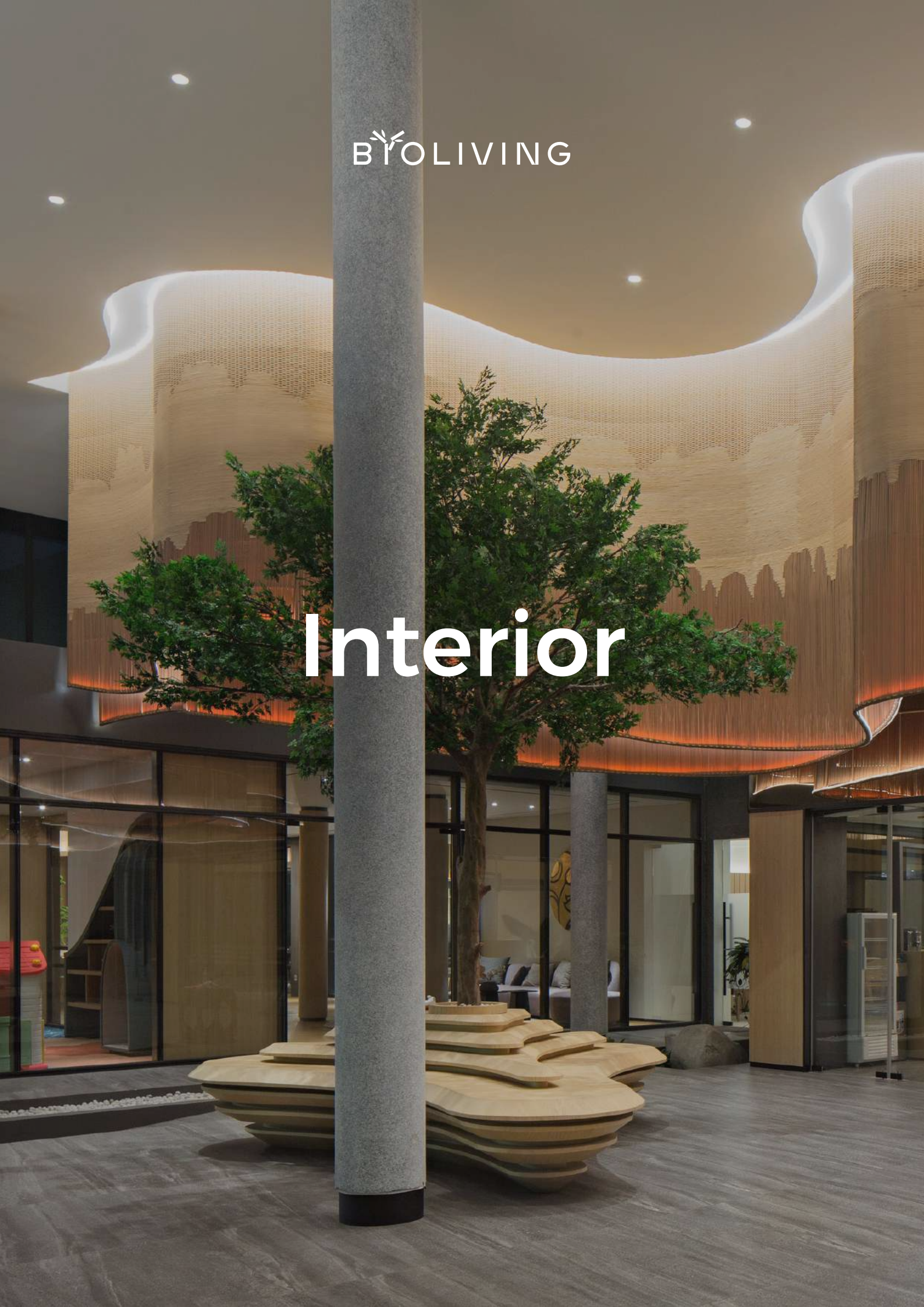
Kopi Se-Indonesia

We develop a new weaving pattern that's considered unique by combining traditional and contemporary weaving design. The twisted elements create a local yet modern identity for the building. Synthetic rattan skin weaving is used to respond the humid context.



BŶOLIVING

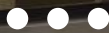
Interior





Selected Projects

We offer the finest artistry in handweaving materials such as rattan, cane, fiber, synthetic, metal, plastic, recycled plastic, and leather. All of our handwoven products can be tailored to the client's goal and vision. We also provide product, pattern and installation consultation for our clients.



Desa Potato Head

As in one of our mission to make earth greener, we tried to step up our material beside of recyclable synthetic rattan. Our RnD team and master weavers reworked 1.7 tons of PET plastics to create the progressive woven geometric ceilings throughout the Desa complex. The wastes are also processed with concrete to create new material for micro elements as in the letter signs here.

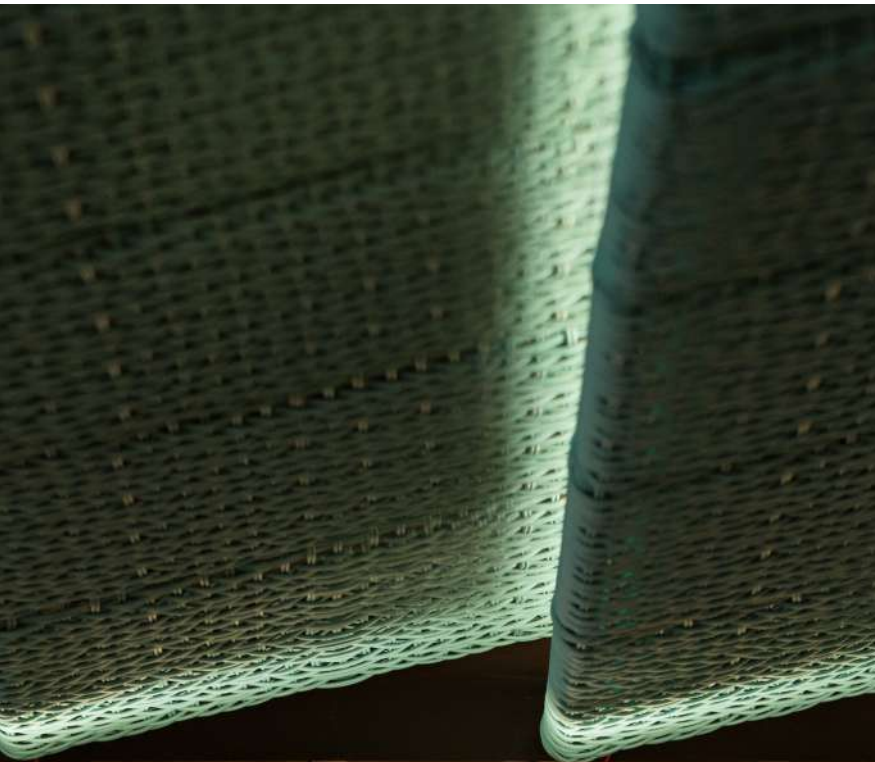


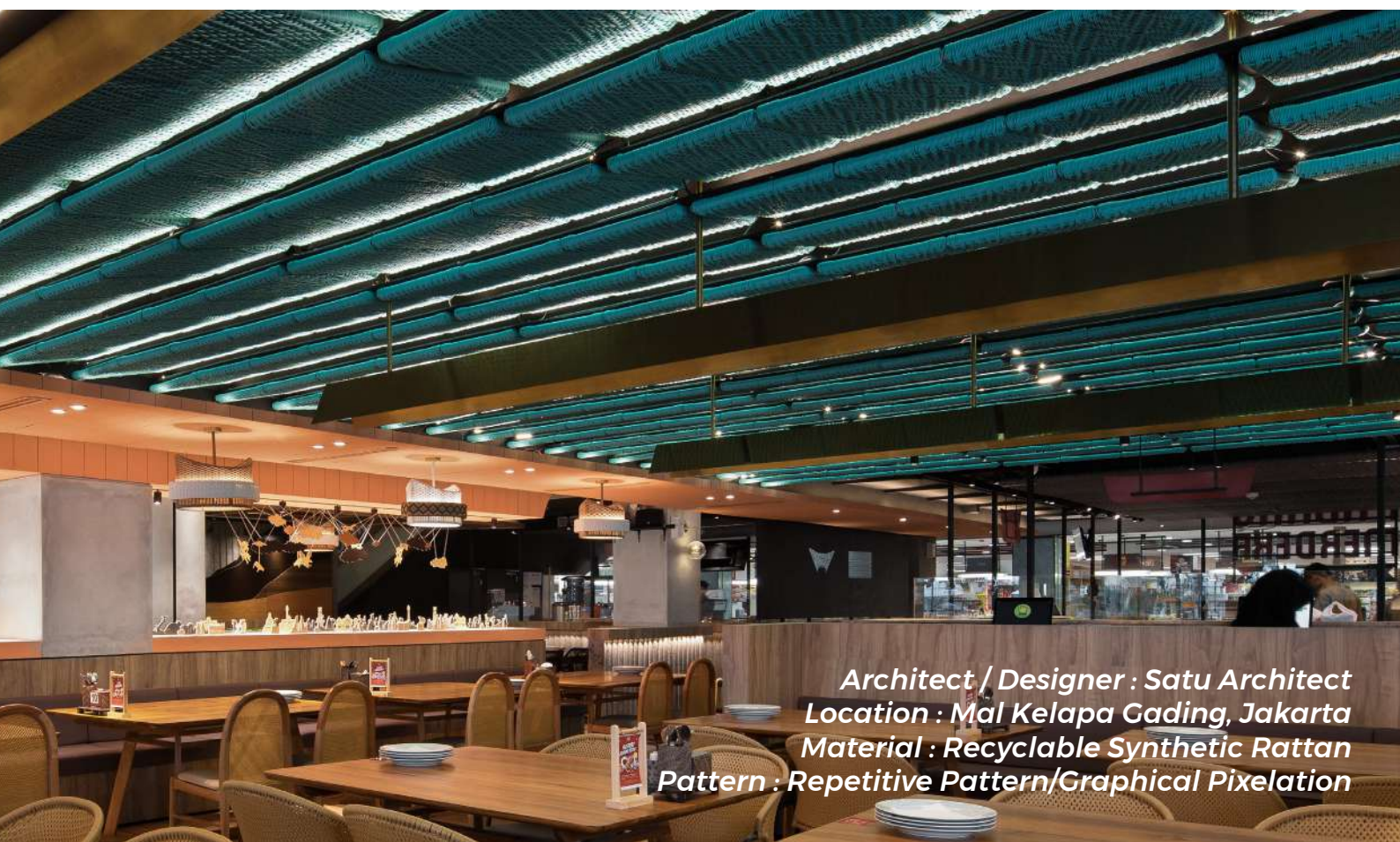


Architect/Designer : OMA
Location : Bali
Material : Ceiling, Recycle Plastic
Pattern : Repetitive Pattern

Padang Merdeka

BYO Living woven panels for the store signage are made of recyclable synthetic rattan. The synthetic rattan is the best choice if you need to match with a specific color. For the store signage, BYO Living provides recyclable synthetic rattan with variations of color for a bespoke rattan weaving. Hence, we use honey wicker, red, white, and black rattan colors for its signage to fulfill the brand identity needs.



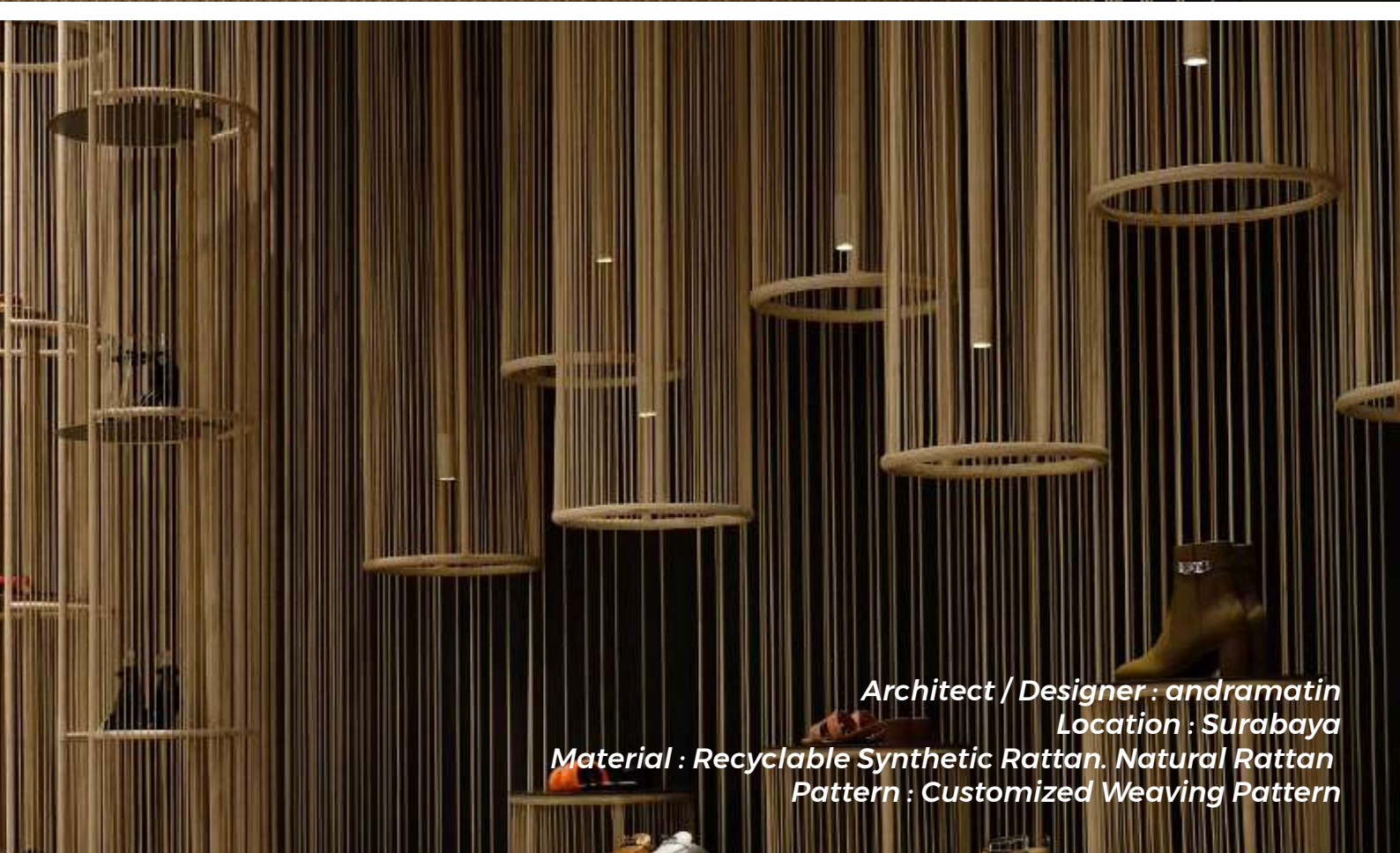


*Architect / Designer : Satu Architect
Location : Mal Kelapa Gading, Jakarta
Material : Recyclable Synthetic Rattan
Pattern : Repetitive Pattern/Graphical Pixelation*

Hermès

Andramatin's work on Hermès translates "dream" into an architectural installation that reflects exceptional idealistic craftsmanship, with direct approval from Paris. BYO Living manufactured the weaving logo and uses the "alur" technique for this project, which sharpens up age-old delicate craftsmanship to carry out hundreds of vertical weavings of straightness to produce incredible subtle shades of nature. We use natural rattan to create a raw exciting feeling to the store.





Architect / Designer : andramatin
Location : Surabaya
Material : Recyclable Synthetic Rattan. Natural Rattan
Pattern : Customized Weaving Pattern

Samasana Club House, The Zora

The Zora is an exclusive residential with luxurious Japanese style design and concept. They are focusing to bring a legacy on a well-balanced life in supporting an active healthy living in a busy life. The residential area provides timeless facilities that can be used for any generation with endless possibilities as each room can be repurposed into anything anytime as needed by the user. Overall, the interior design of Samasana Club House presents a Modern Japanese style that focusing on balance and harmony while creating a healthy and comfortable environment for its users



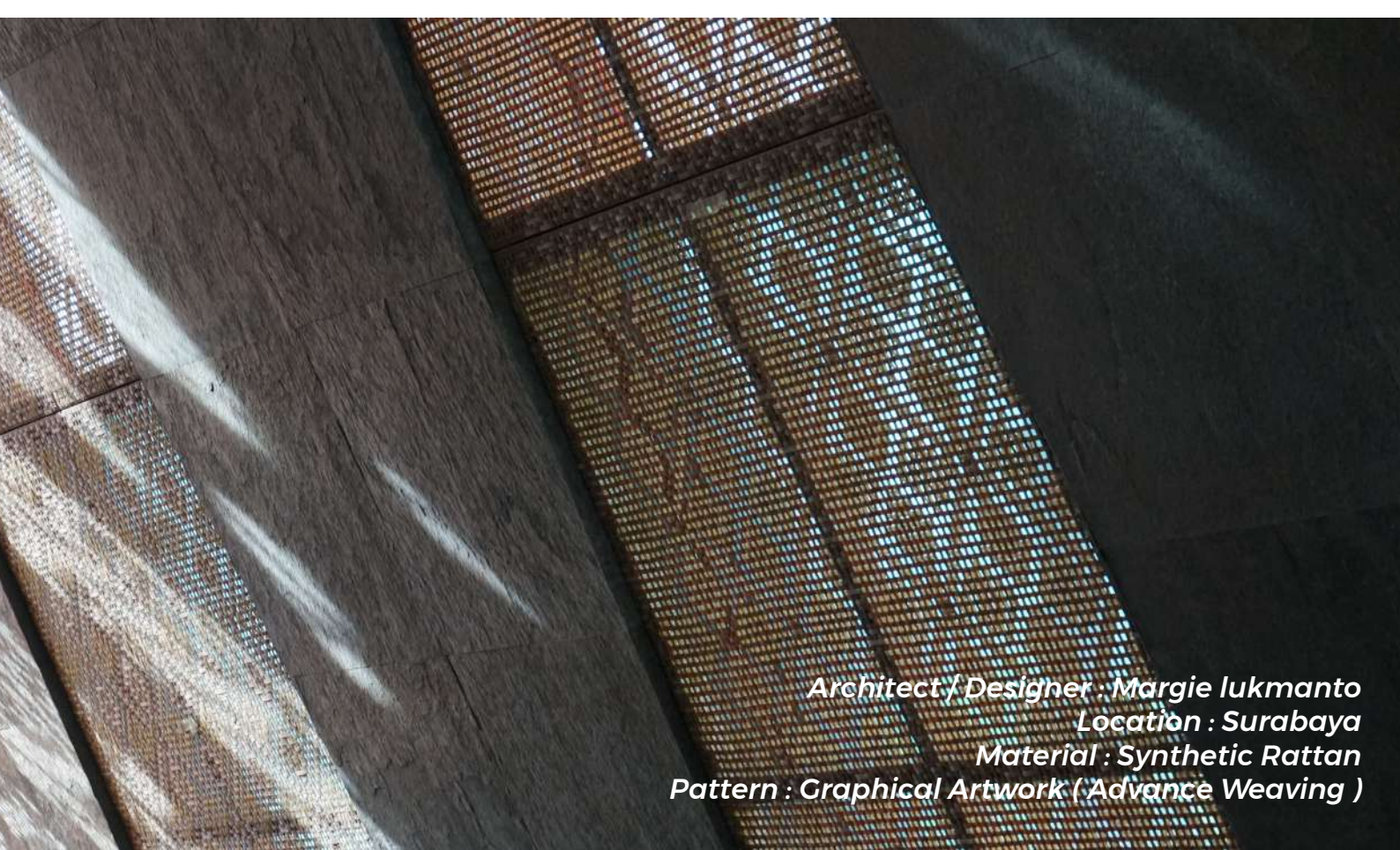


*Architect/Designer : Metaphor Interior Architecture
Location : BSD City
Material : Interior (Hyacinth synthetic)
Pattern : Customized Weaving Pattern*

Goa Maria, Catholic Cathedral Sacred Heart of Jesus

With our customized pattern made specially for Goa Maria, we were able to achieve the breathtaking sights inside the Goa Maria building. The flower patterns that symbolize sacred prayer that was lifted up to the lord.





*Architect / Designer : Margie lukmanto
Location : Surabaya
Material : Synthetic Rattan
Pattern : Graphical Artwork (Advance Weaving)*

A close-up, slightly blurred photograph of a chair's backrest. The backrest is made of a light-colored, woven material, likely rattan or bamboo, with a consistent diamond or basketweave pattern. The wooden frame of the chair is visible at the bottom and sides, showing a natural wood grain. The lighting is soft and even, highlighting the texture of the weave.

BŸOLIVING

Furniture

Selected Projects

We offer the finest artistry in handweaving materials such as rattan, cane, fiber, synthetic, metal, plastic, recycled plastic, and leather. All of our handwoven products can be tailored to the client's goal and vision. We also provide product, pattern and installation consultation for our clients.



Desa, Potato Head

As in one of our mission to make earth greener, we tried to step up our material beside of recyclable synthetic rattan. Our RnD team and master weavers reworked 1.7 tons of PET plastics to create the progressive woven geometric ceilings throughout the Desa complex. The wastes are also processed with concrete to create new material for micro elements as in the letter signs here.



Architect / Designer : OMA
Location : Bali
Material : Recyclable Plastic
Pattern : Customized Weaving Pattern



Kimpton (Bali)

As a core space in every resort unit, a warm bedroom is always desired. BYO Living provides an interesting accent using our signature synthetic rattan with to create depth in the bedroom. The texture from our pattern projected with warm lights makes the room cozier than ever.



Architect / Designer : White Jacket

Location : Bali

Material : Recyclable Synthetic Rattan

Pattern : Repetitive Pattern



Kopi Se Indonesia

We combine traditional and contemporary weaving design to develop a new way of pattern creating. We apply several weaving technique for all of the spatial elements for this project from the ceiling, wall panels, to some ceiling installations. The twisted rattan create a local yet modern identity for the iconic fixtures.



*Architect / Designer : Seven Cleine Interior
Location : Cading Serpong
Material : Recyclable Synthetic Rattan
Pattern : Customized Weaving Pattern/Graphical*



MONOLITH

The table located at the front of the showroom gets the attention of visitors, the combination of marble with woven rattan makes the table come alive in the middle of the open space. The pattern used on this table makes its own charm, the fractures that exist make the pattern look alive for this table.



*Architect / Designer : Jimmy
Location : Surabaya
Material : Recyclable Synthetic Rattan
Pattern : Graphical Pixelation Weaving*



Starbucks Reserve

The table located at the front of the showroom gets the attention of visitors, the combination of marble with woven rattan makes the table come alive in the middle of the open space. The pattern used on this table makes its own charm, the fractures that exist make the pattern look alive for this table.



Architect / Designer : Bitte Design Studio
Location : Bali
Material : Natural Meat Rattan, Synthetic Rattan
Pattern : Repatitive Pattern, Costumized Pattern





BYOLIVING

Artwork / Exhibition



Selected Projects

We offer the finest artistry in handweaving materials such as rattan, cane, fiber, synthetic, metal, plastic, recycled plastic, and leather. All of our handwoven products can be tailored to the client's goal and vision. We also provide product, pattern and installation consultation for our clients.





Architect / Designer : Andra Marin

Location : Italy

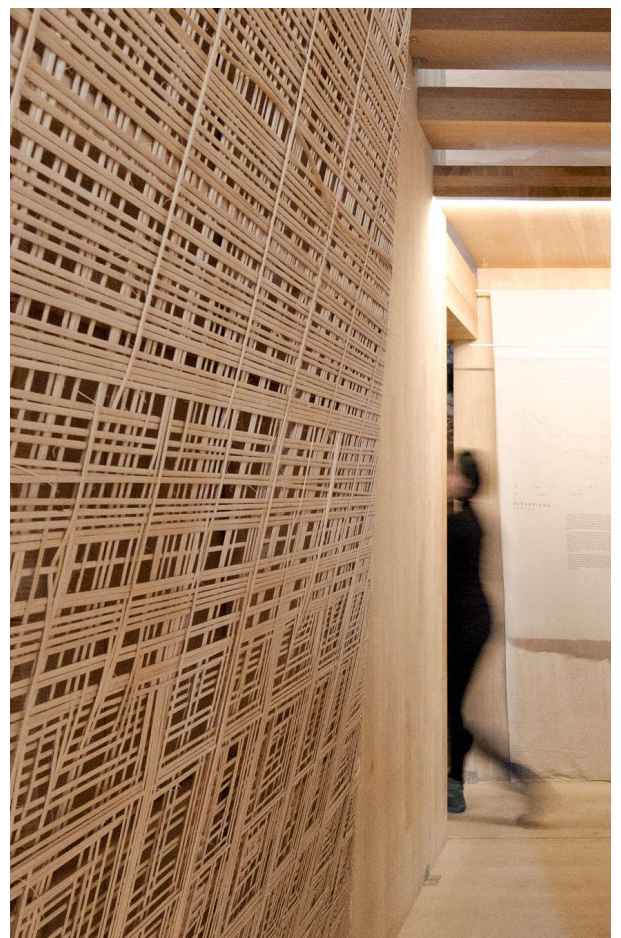
Material : Natural

Pattern : Graphical Pixelation (Advance Weaving)



Venice Biennale Italy

In 2018, Our installation “Matter and Place” was exhibited at the 16th Venice Biennale of Architecture. Collaborated with a world well-known Indonesian architect, Andra Matin, we developed a woven façade which fuses diverse patterns of Indonesian textiles into a rustic yet contemporary composition. This rattan weaving is made with holographic techniques that is inspired by the traditional weaving techniques of the Dayak tribe from Kalimantan.





FLU3



K-Thengono

ARCH : ID 2022 Urban Wonders

In the exhibition, we display the grassroots of architectural response by 6 leading brands to deal with the hardness of Covid-19 pandemic and extreme climate change. With architectural weaving technology recognized by Japan's Good Design Award 2021, BYO Living collaborates in 20 conjunction programs with architects at 7 countries. Our hope, this initiative can inspire real global recovery as proposed by the coming G20 Summit in Bali.



Bitte



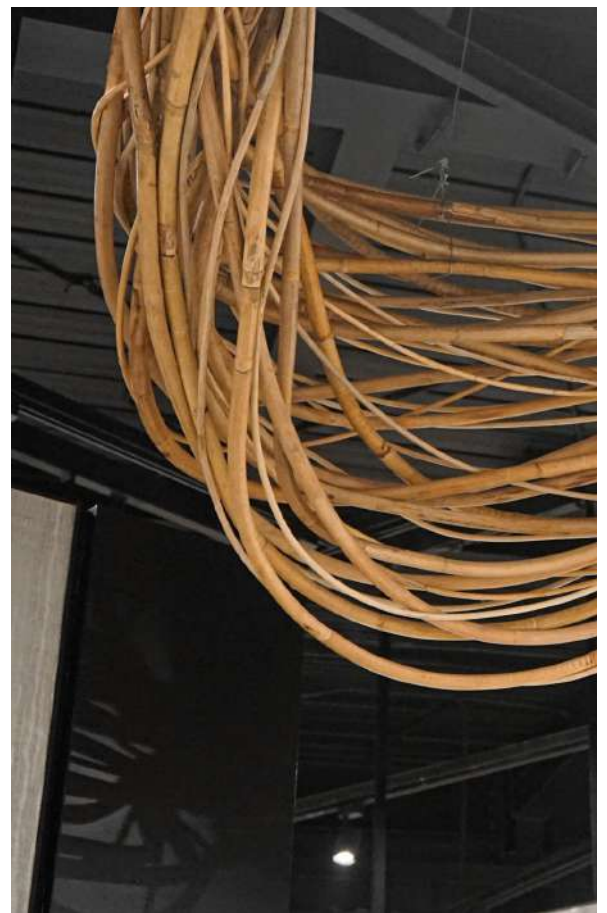
*Architect / Designer : Budi Kurniawan
Location : Alam Sutera
Material : Natural Rod Rattan
Pattern : Customized Artwork*



Bottega Artisan

Artistic genre of Three-dimensional work that build a unity. This installation represents rod rattan with various diameters, and invisible structure to maintain the shape.

The natural colors with dim shades of the room make this installation pop up with high artistic value.







GOOD DESIGN AWARD 2021

Congratulations

Congratulations on winning the award this year.
Here we enclose materials for GOOD DESIGN AWARD 2021 winners.

The winners will be announced at 1:30 p.m. on October 20th by the organizer. Until then, please refrain from telling the results publicly. Winners will be able to use "G-Mark" free of charge from October 20 to November 7, the award promotion period. We hope you will take advantage of this opportunity. On and after November 7, you are requested to apply for annual usage.

We will continue to disseminate the award winners to the public through various events and media.
We look forward to your active promotion with G Mark.

Enclosed:

1. G-Mark Usage Guide
2. Order Form for G-Mark PR Items
3. G-Mark sticker sample sheet
4. Information on Award Winners Special Website

Yours sincerely,

Makiko Tsumura (Ms.), Director
Good Design Award Office, Japan Institute of Design Promotion
Phone: +81 3 6743 3777
Email: info-e@help.g-mark.org

Rekajalin

(Winner Good Design Award 2021)

We are beyond grateful to announce that our newest weaving technology, Rekajalin, has been announced as the winner of the Good Design Award 2021 from Japan.

The steric and geometric design that was created by computer graphics was precisely expressed by traditional rattan knitting, and it shows the new potential to utilize traditional crafts by technology. We hope this weaving panel can contribute to keep on creating more sustainable living for human beings. Selected to be one of the 36 international winners out of up to 5.835 entries, we hope this award may encourage Indonesian creative industry workers to keep on creating.



BYOLIVING

Materials & Patterns





Selected

We offer the finest artistry in handweaving materials such as rattan, cane, fiber, synthetic, metal, plastic, recycled plastic, and leather. All of our handwoven products can be tailored to the client's goal and vision. We also provide product, pattern and installation consultation for our clients.





Materials

Natural Rattan



Natural Rattan
Meat Rattan 3mm



Natural Rattan
Rod 3mm



Natural Rattan
Rattan Skin



Natural Rattan
Meat Rattan 6mm

Materials

Recyclable Synthetic Rattan



Recyclable Synthetic Rattan
Natural



Recyclable Synthetic Rattan
Honey Wicker



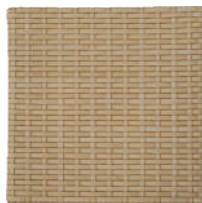
Recyclable Synthetic Rattan
YM Brown



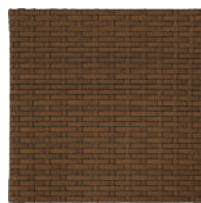
Recyclable Synthetic Rattan
Caramel Sauce



Recyclable Synthetic Rattan
JNS



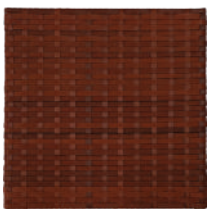
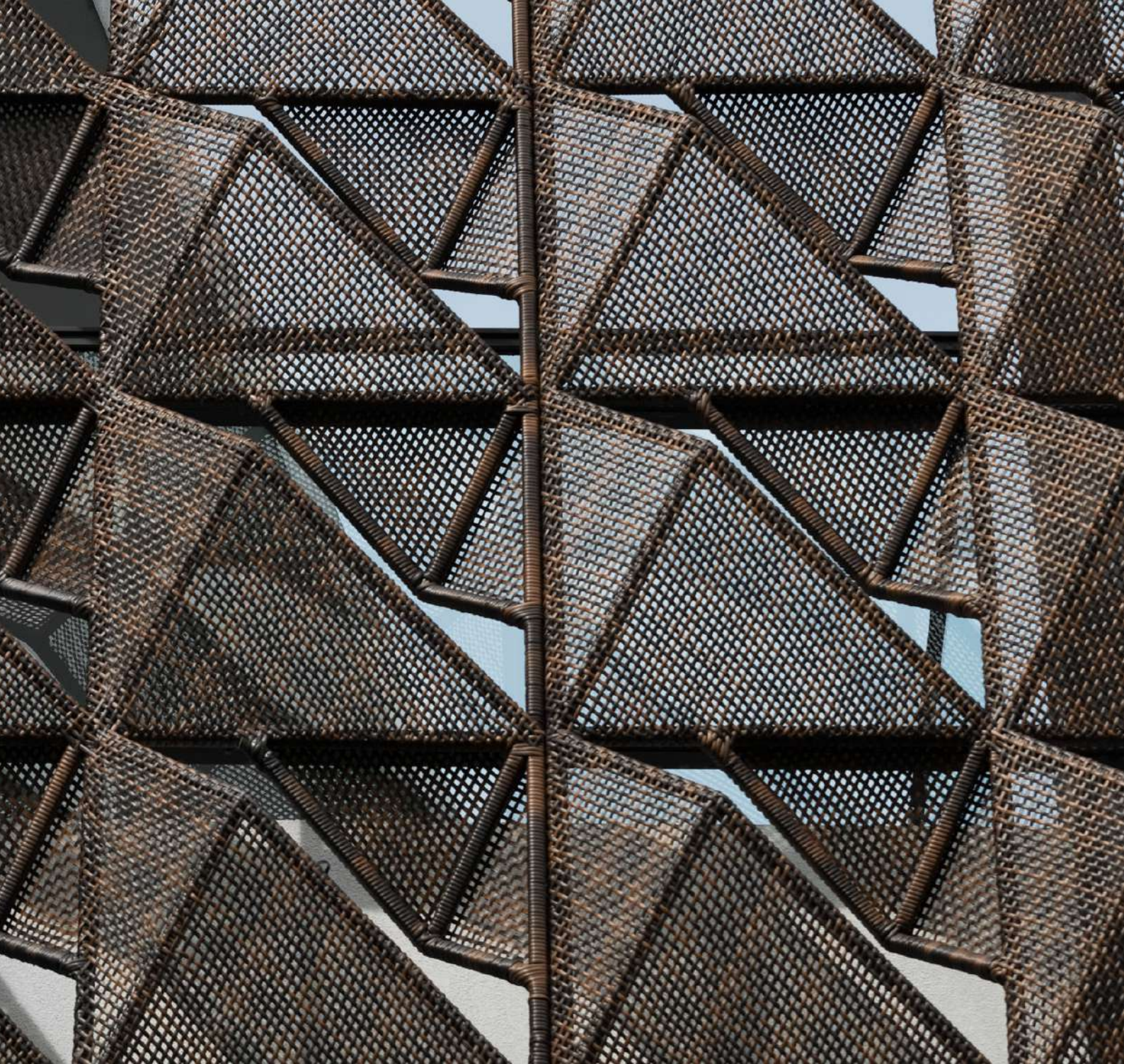
Recyclable Synthetic Rattan
Hyacinth Cream



Recyclable Synthetic Rattan
Dark Brown



Recyclable Synthetic Rattan
Golden Crown



Recyclable Synthetic Rattan
Hot Amber



Recyclable Synthetic Rattan
Wall Coat



Recyclable Synthetic Rattan
Translucent White



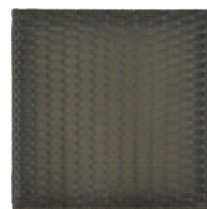
Recyclable Synthetic Rattan
White



Recyclable Synthetic Rattan
Blue Ral 006



Recyclable Synthetic Rattan
Black



Recyclable Synthetic Rattan
Translucent Grey



Recyclable Synthetic Rattan
Lime Stone

Materials

Recyclable Synthetic Rattan



Recycled Synthetic Rattan
Dark Earth



Recycled Synthetic Rattan
Burn Bronze



Recycled Synthetic Rattan
Coffee Bean



Recycled Synthetic Rattan
Flat Hyacinth Cream 25mm



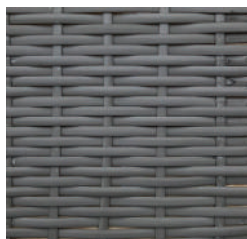
Recycled Synthetic Rattan
Grey



Recycled Synthetic Rattan
Transluenth Honey



Recycled Synthetic Rattan
Medium Grey Star Ship 8mm



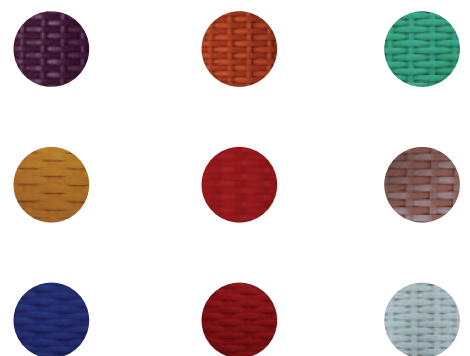
Recycled Synthetic Rattan
Byo Grey 4 mm



Recycled Synthetic Rattan
Hyacinth Grey 12mm



Recycled Synthetic Rattan
Transluenth Dark Grey



**Available for
customized color*

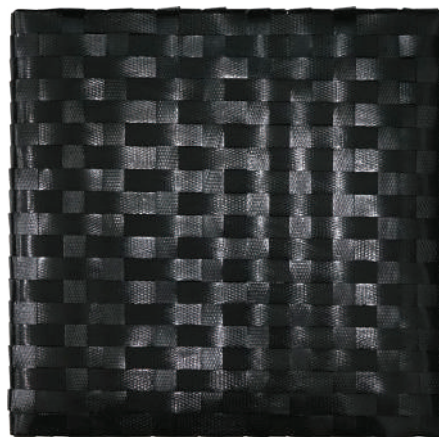


Materials

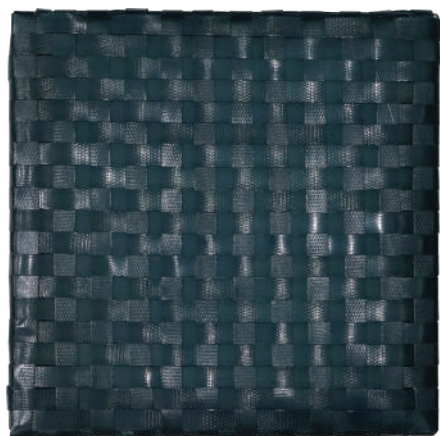
Recycle Plastic



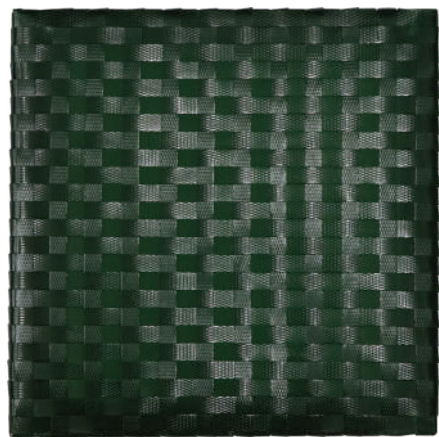
Recycle Plastic
Grey



Recycle Plastic
Black



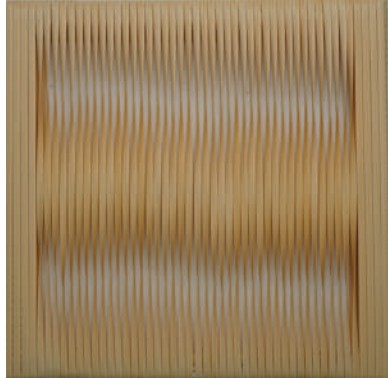
Recycle Plastic
Blue

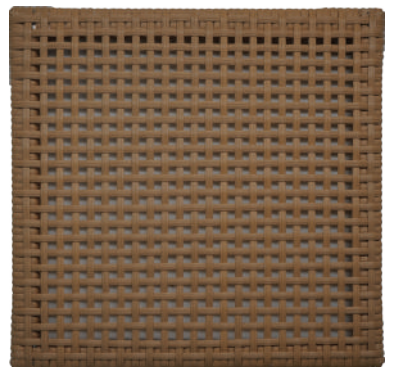
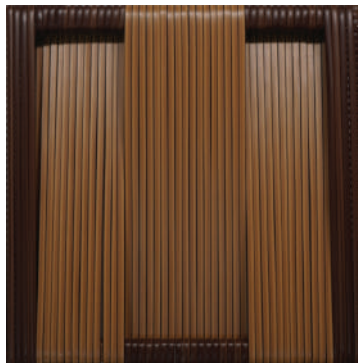
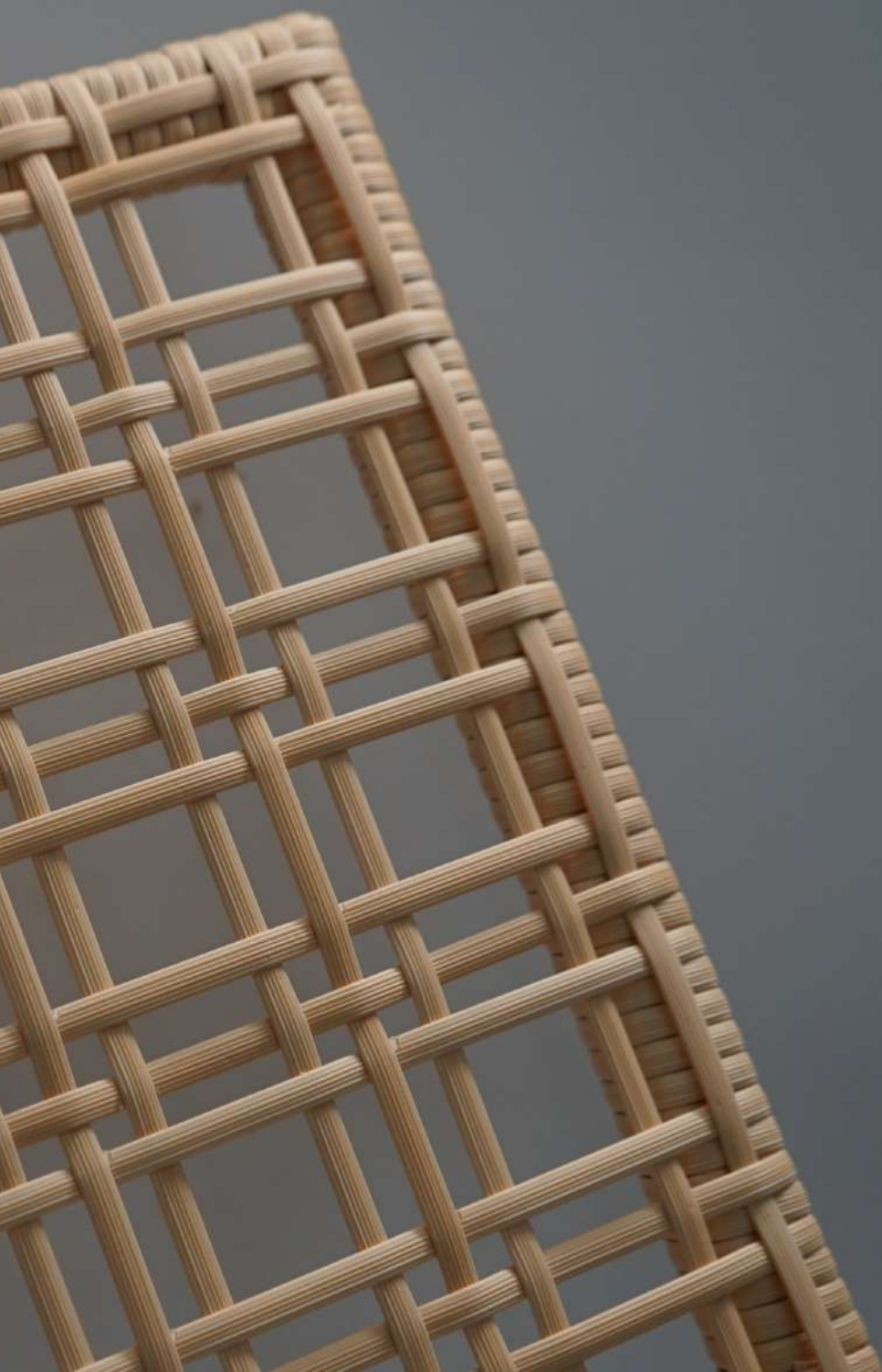


Recycle Plastic
Green



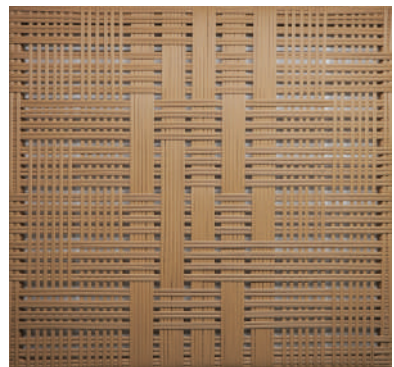
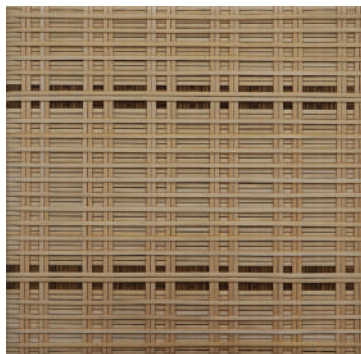
Easy Patterns Selected

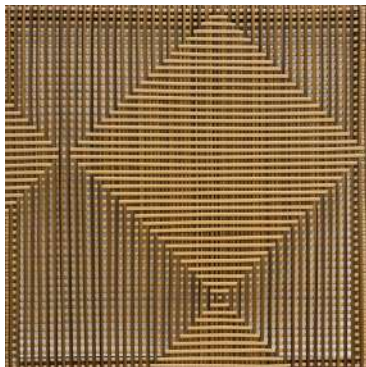
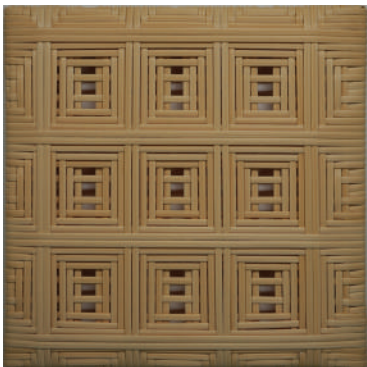
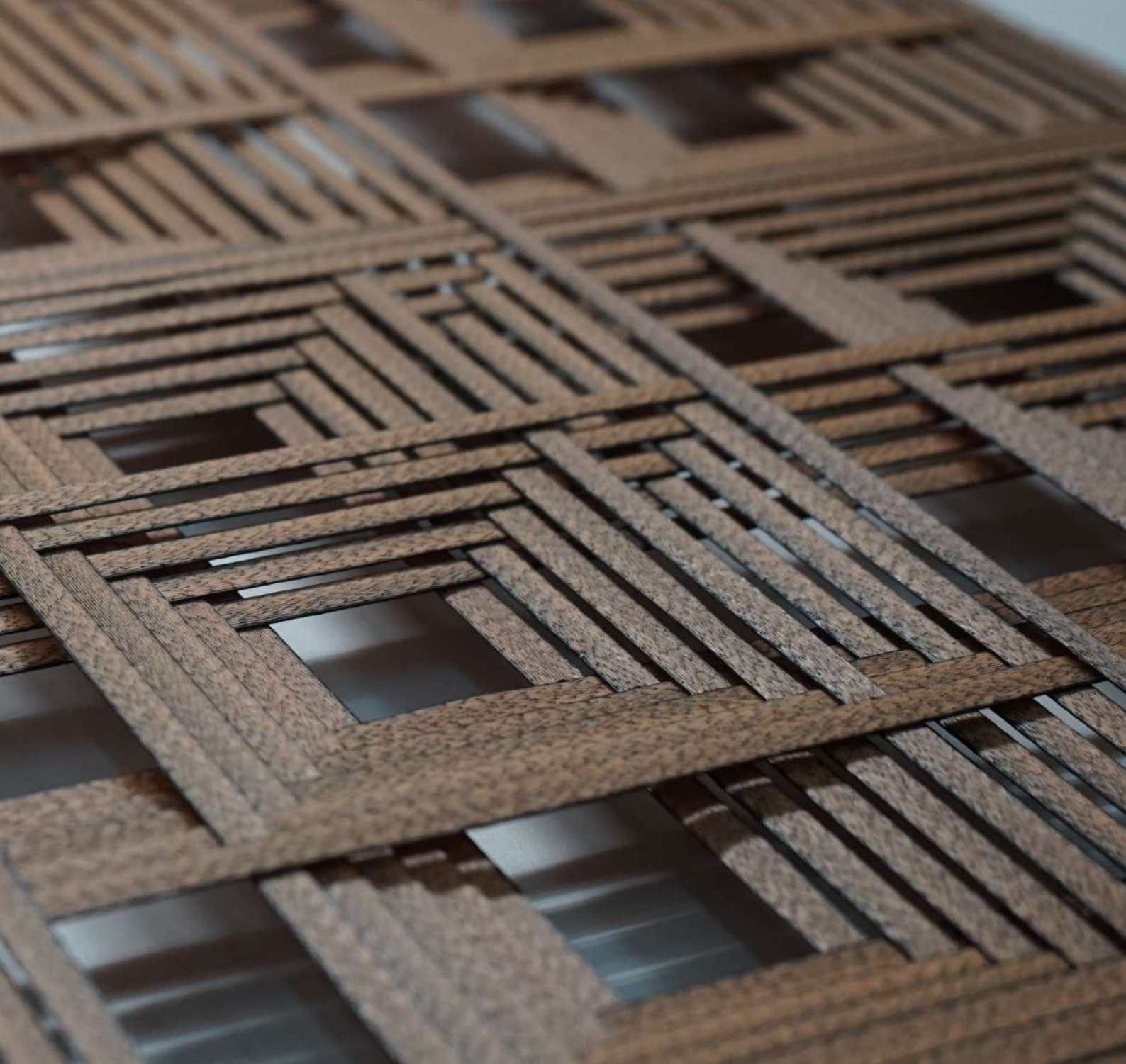






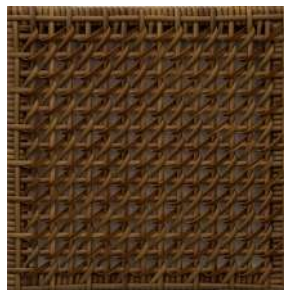
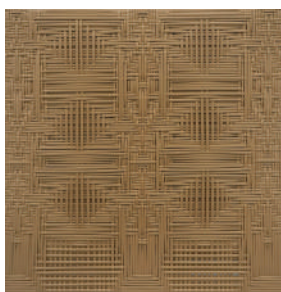
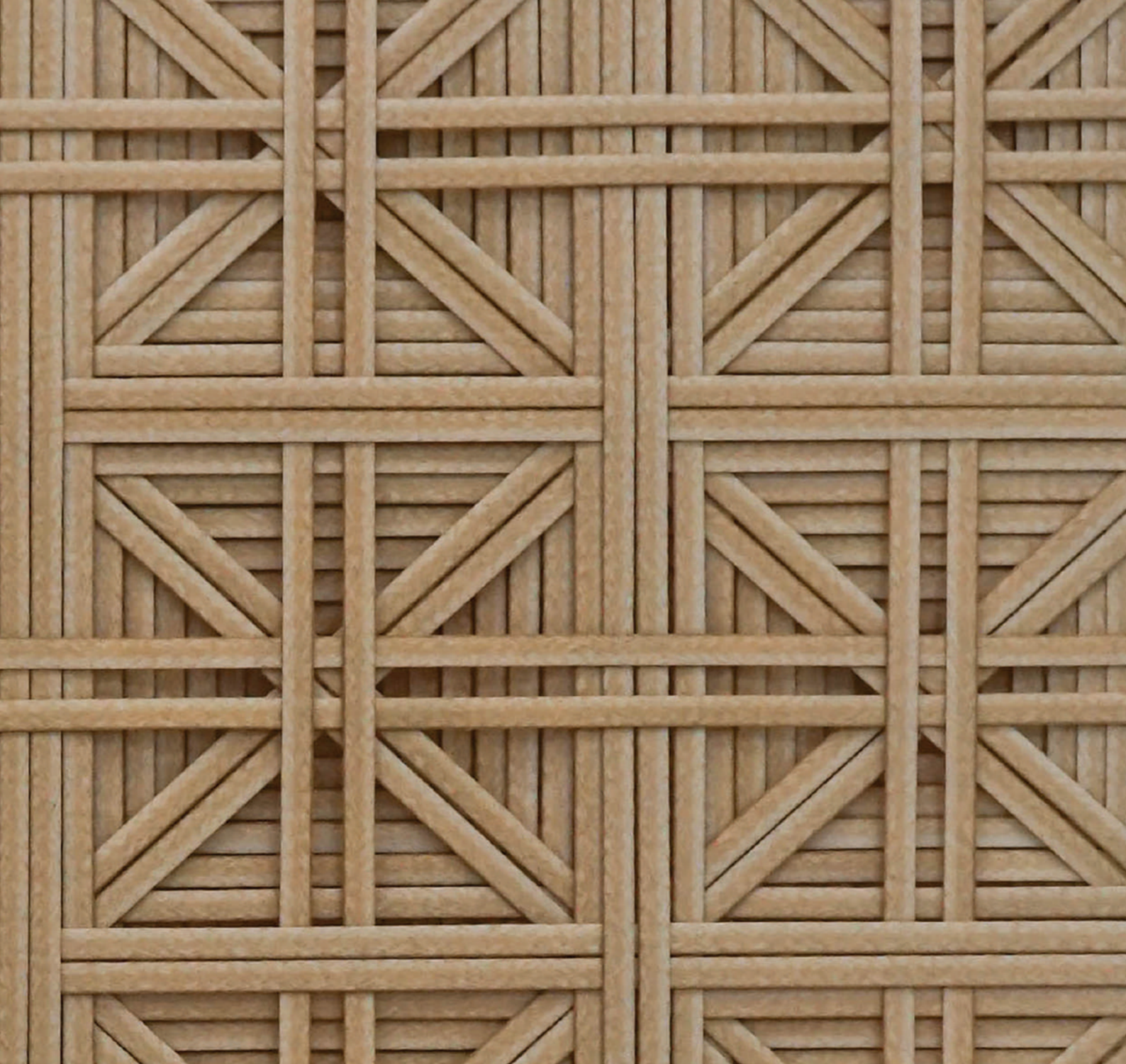
Intermediate Patterns Selected



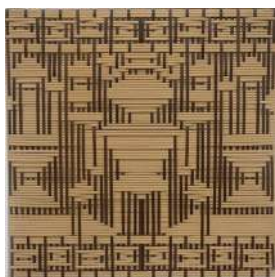
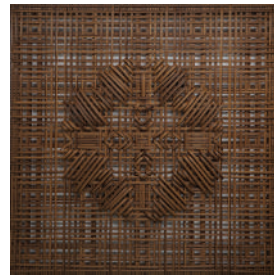


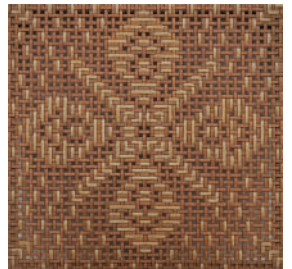
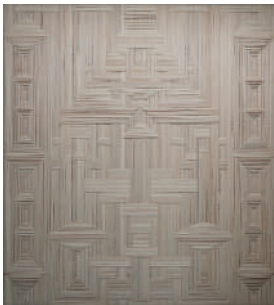
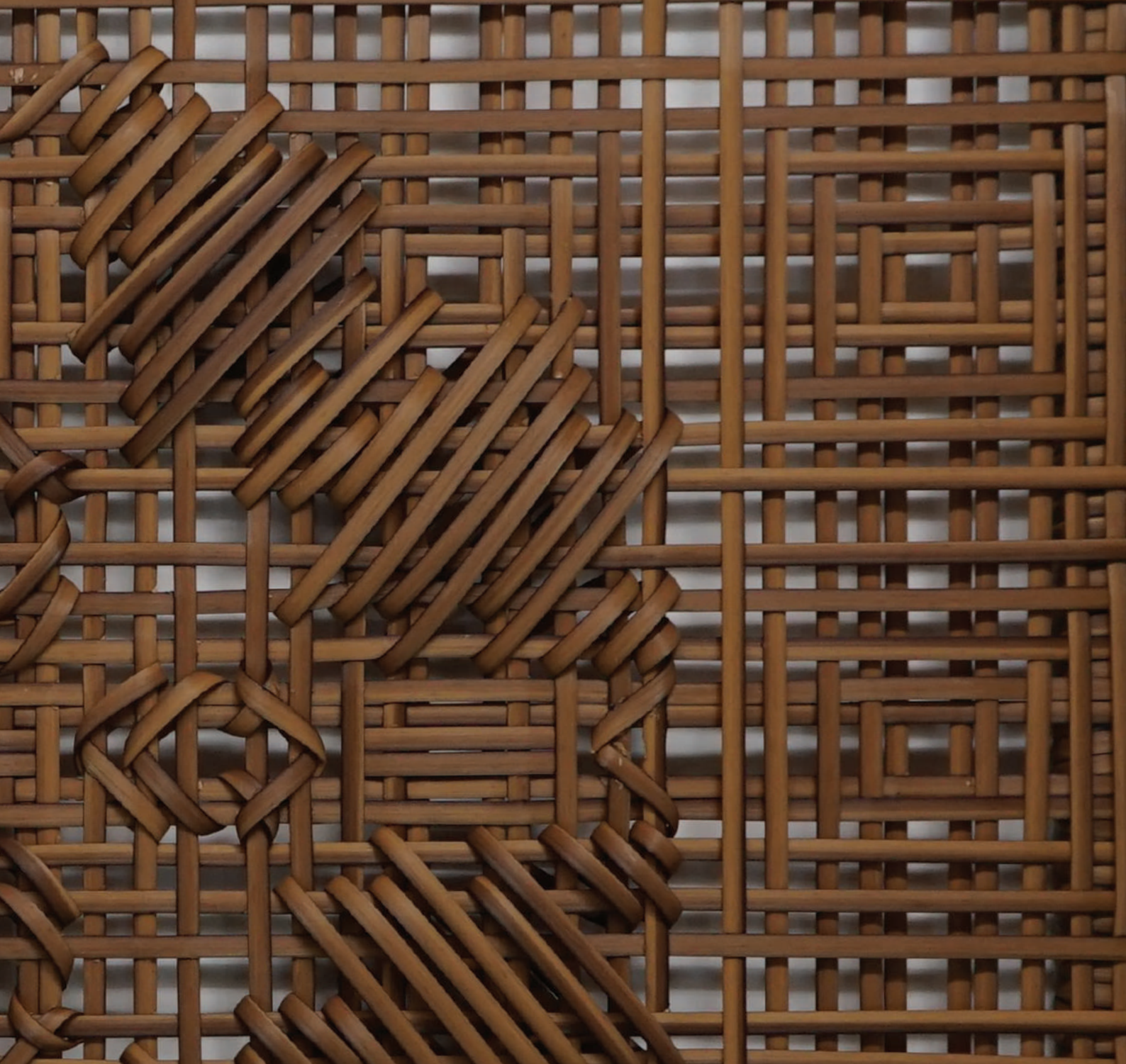
Advanced Patterns Selected





Artwork Patterns Selected







BYOLIVING

We offer finest artistry in hand weaving materials such as rattan, cane, fiber, synthetic, metal, plastic, recycled plastic, and leather. All of our handwoven products can be personalized with client's goals and vision. We also provide product, pattern and installation consultation for our clients.



GET IN TOUCH WITH US

Send us a message and visit us.

Phone : +62 818 - 800 - 849
Mail : project@byoliving.com
Instagram : [@byoliving](https://www.instagram.com/byoliving)
Website : www.byoliving.com

Byo Living Workshop & Office
Jl. Pluit Karang Utara No. 79A Blok A4
Muara Karang, Pluit, Penjaringan
Jakarta, Indonesia 14450

BYOLIVING

Brand Catalogue

BYOLIVING

Brand Catalogue

